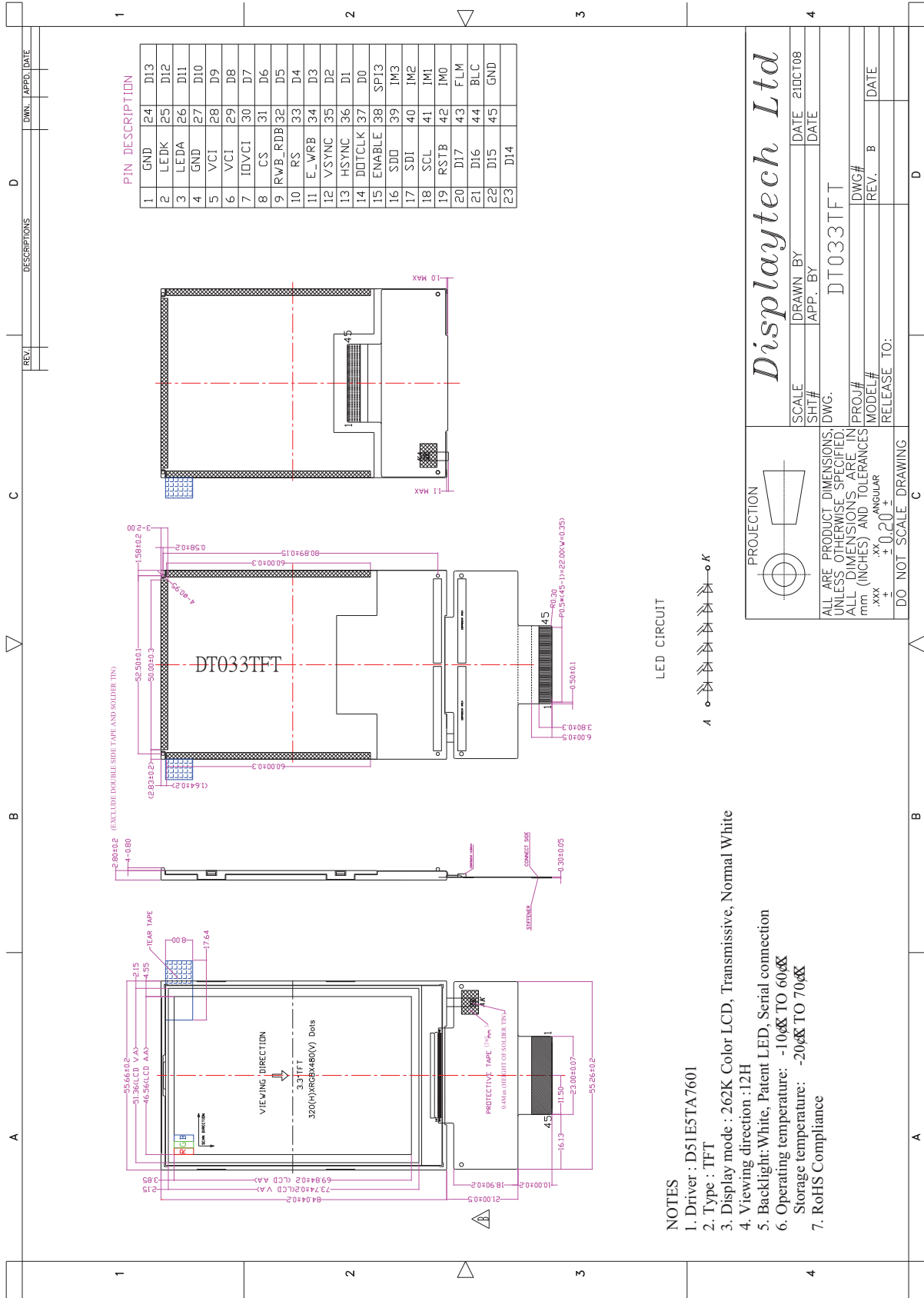


### 4. Mechanical Drawing – SDT033TFT



#### NOTES

1. Driver : D51E5TA7601
2. Type : TFT
3. Display mode : 262K Color LCD, Transmissive, Normal White
4. Viewing direction : 12H
5. Backlight: White, Patent LED, Serial connection
6. Operating temperature: -10℃ TO 60℃  
Storage temperature: -20℃ TO 70℃
7. RoHS Compliance